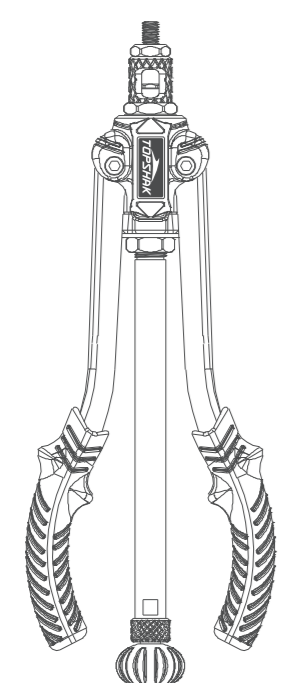




# User Manual TS-RG2



EC REP

SCHUEFER Technologies GmbH  
Address: Herlitzstrasse 37, 91052, Erlangen, Germany  
E-mail: Hsk.Zhang@schuefer.com

UK REP

VISHTEC UK Co., Ltd  
Address: Unit G25 Waterfront Studios, 1 Dock Road  
London, E1 6 1AH  
E-mail: Vincent.feng@vish-tec.com

材质: 105gt铜版纸  
尺寸: 145 x 210 mm  
印刷: 四色  
装订: 骑马钉

Leading new generation tool

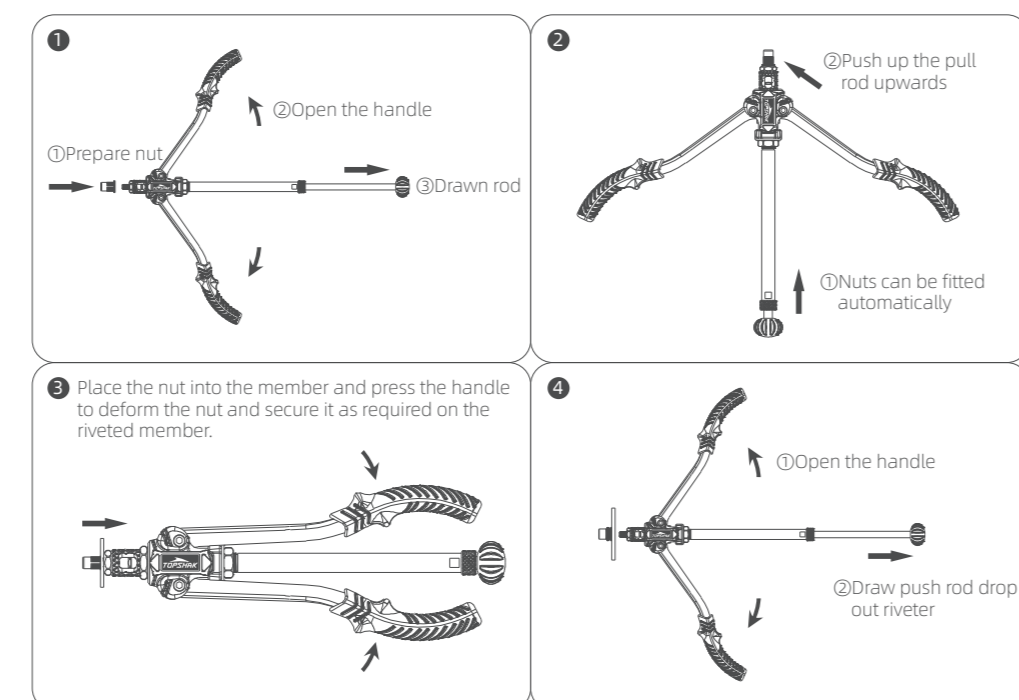
## Contents

English.....	01
French.....	02
German.....	03
Italian.....	04
Spanish.....	05

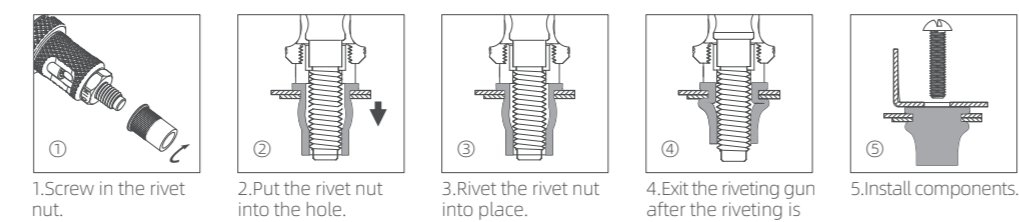
### Riveting Nut Gun Operation Instructions

- I. Product Parameter**
- The maximum moment arm multiple is 30
  - Total length: 350mm
  - Gross weight: 1150G

#### 2. Operating steps



#### Rivet nut work steps

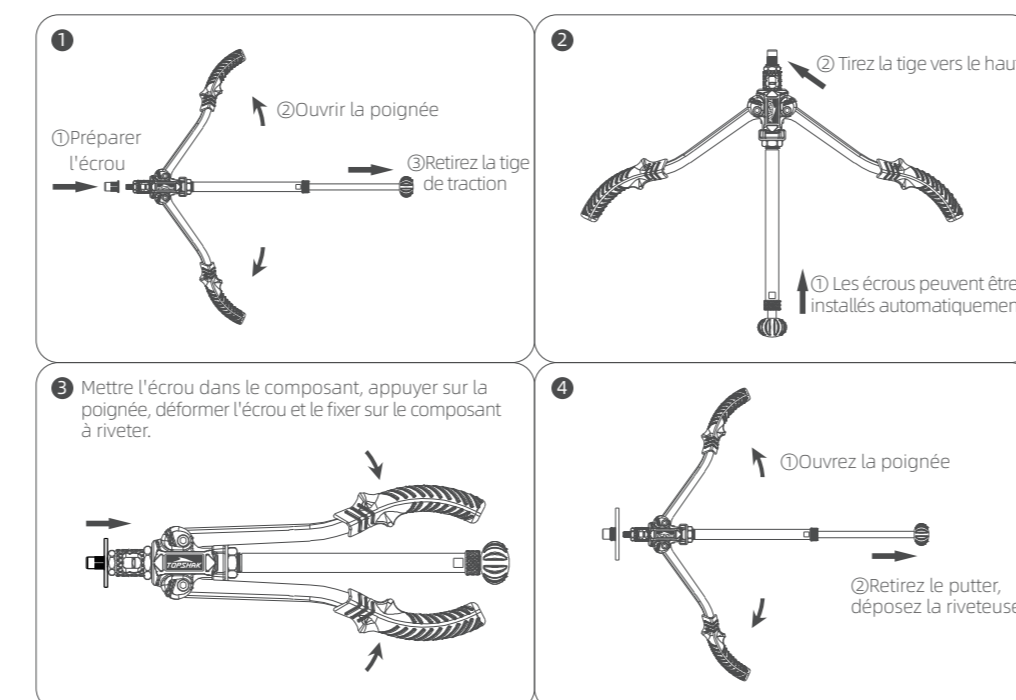


### English

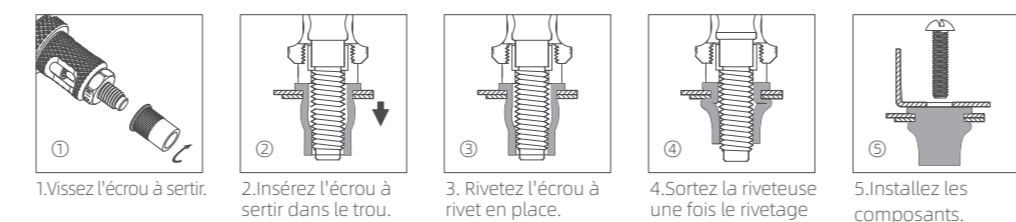
### Manuel de l'Utilisateur de la Riveteuse à Écrous

- I. Paramètres du Produit**
- Force maximale bras multiple 30
  - Longueur totale: 350 mm
  - Poids total: 1150G

#### II. Étapes de l'opération



#### Étapes de travail du rivetage de l'écrou

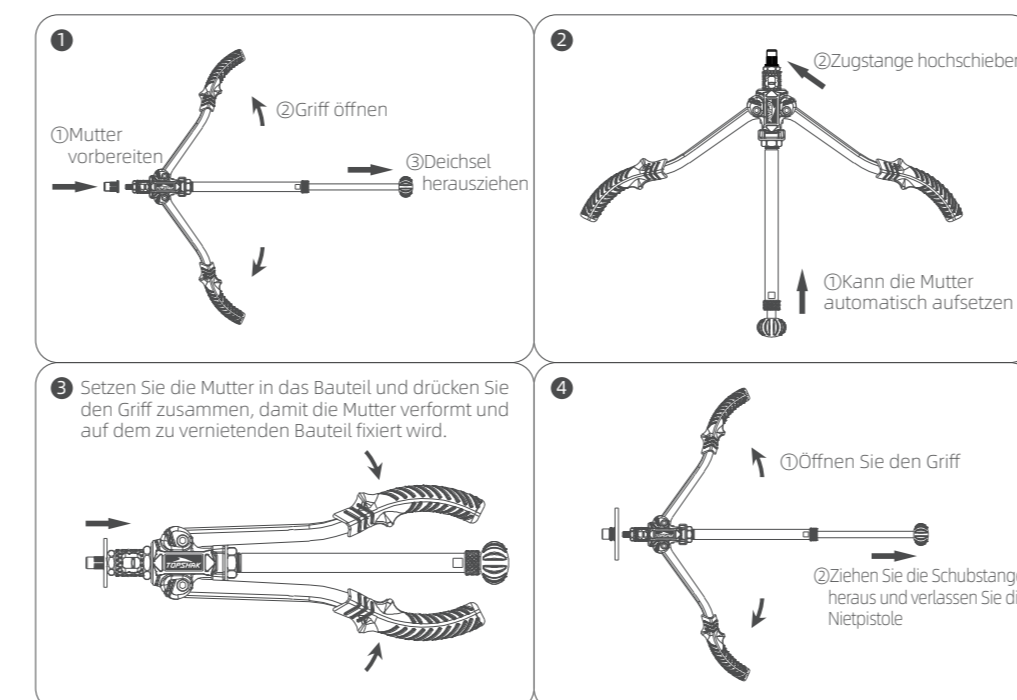


### French

### Nietmutterpistole Gebrauchsanweisung

- I. Produktparameter**
- Maximale Kraft Arm Multiplikator 30
  - Gesamtlänge: 350mm
  - Gesamtgewicht: 1150G

#### II. Arbeitsschritte



#### Arbeitsschritte der Einriemutter

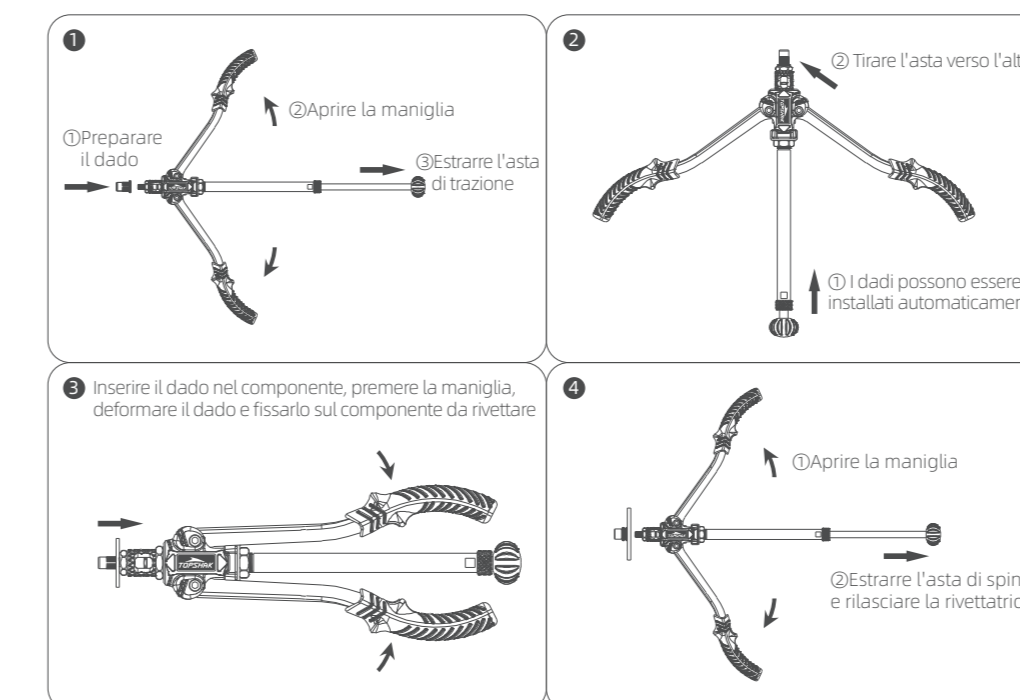


### German

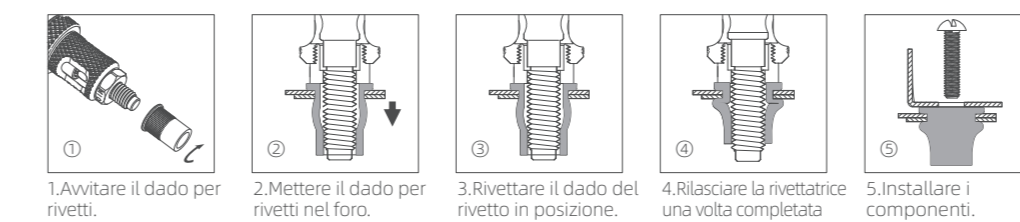
### Manuale Utente della Rivettatrice per Dadi

- I. Parametri del Prodotto**
- Forza massima moltiplo del braccio: 30
  - Lunghezza totale: 350mm
  - Peso totale: 1150G

#### II. Fasi operative



#### Fasi di lavoro della rivettatura del dado

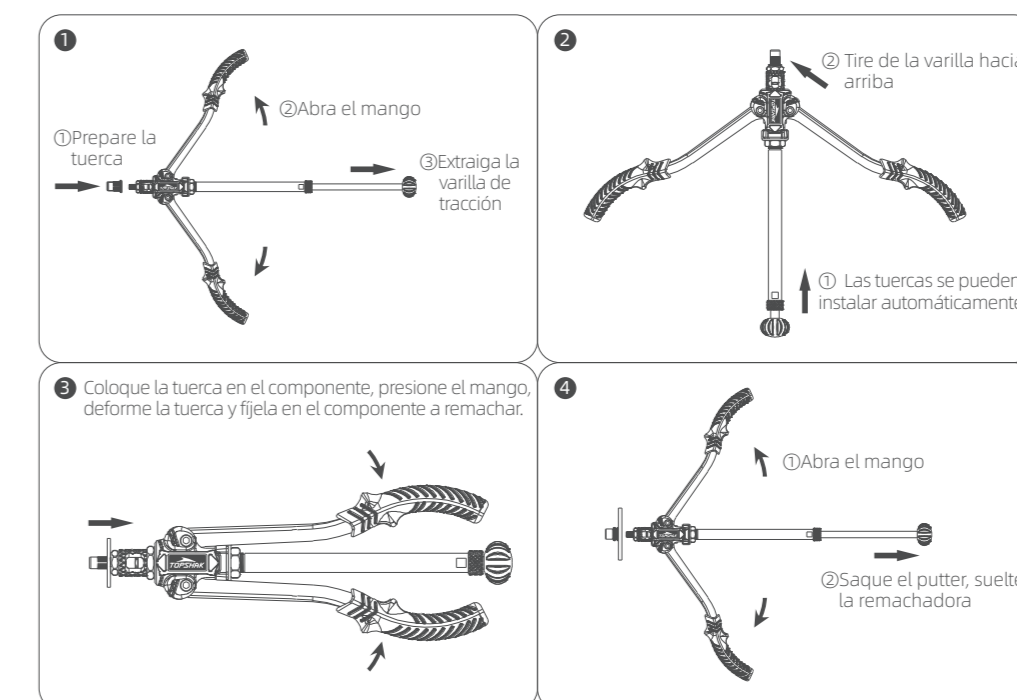


### Italian

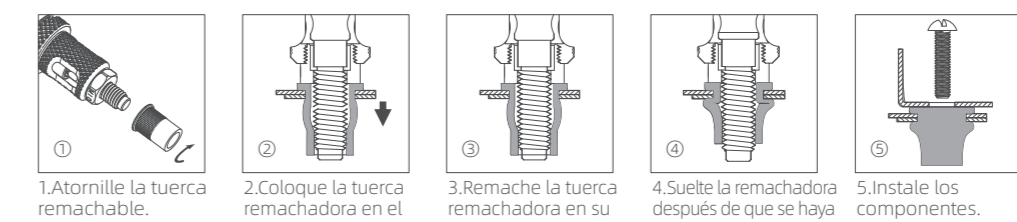
### Manual del Usuario de la Remachadora de Tuercas

- I. Parámetros del Producto**
- Fuerza máxima del brazo múltiple: 30
  - Longitud total: 350 mm
  - Peso total: 1150G

#### II. Pasos de funcionamiento



#### Pasos de trabajo de la remache de tuerca



### Spanish